

# PLANTER'S RETREAT

*tallahassee, florida*

We put a new twist on a traditional farmhouse, and then loaded it with family-friendly ideas and fun interiors. Living in the country never seemed so appealing.



Breezeway



Winding along the gently curved drive, it hits you: City life is far away, and that's okay. Orchards, pastures, and flowerbeds surround a crisp-white farmhouse, with its metal roof gleaming in the sun. Nearby, majestic live oaks cloaked with Spanish moss provide shade, while a tranquil pond reflects the open sky. We've arrived at Planter's Retreat, our Florida Idea House and Farmstead.

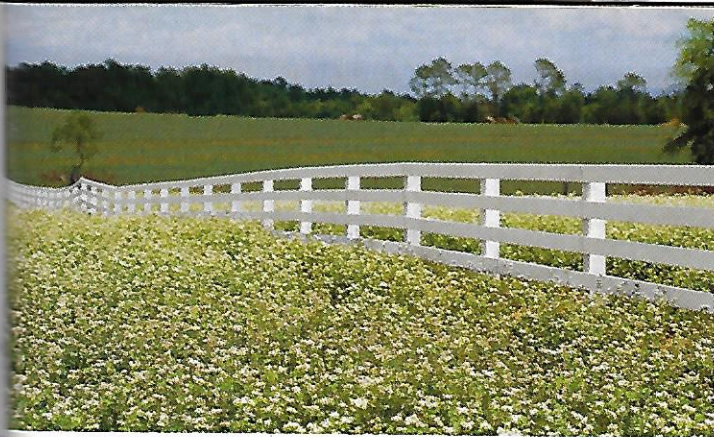
## Trading Urban Sprawl for Open Space

Planter's Retreat appeals to the outdoors lover and to anyone seeking more than a cookie-cutter yard. The challenge for the firm of Eskew+Dumez+Ripple was to build a 3,320-square-foot home that combines traditional architecture with modern amenities. WhiteFence Farms, Red Hills is being developed by The St. Joe Company on 373 acres.

## Familiar Forms, New Materials

Laurie Dozier and Curtis Whigham of Mad Dog Design & Construction Co., Inc., also deserve applause for their use of low-maintenance materials. "Take the roofing system for instance," says Curtis. "It's made of prefabricated panels with V-groove pine planks on the bottom, insulation in the middle, and sheathing for the metal roof on top."

by ROBERT MARTIN • photography LAUREY W. GLENN, BETH DREILING • styling ALAN HENDERSON



### Life's a Breeze

One of the most notable features is a breezeway that runs through the house, creating two separate first-floor living sections. This open passageway, also called a dogtrot, catches cool breezes and serves as a refuge from the sun. Architect Mark Ripple says, "During winter months or if the homeowners desire privacy, there's a barn door at the dogtrot entrance that can be closed."

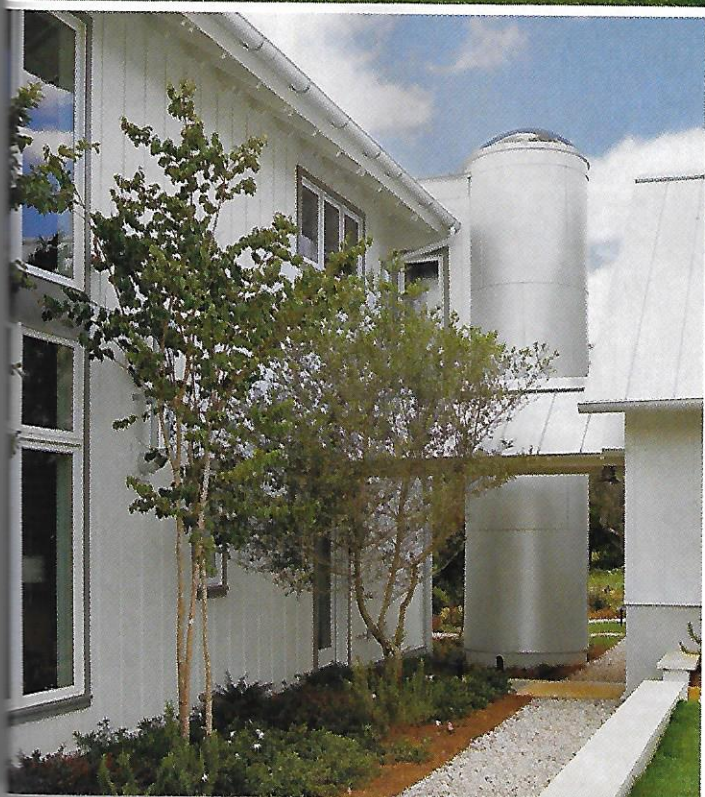


### GREAT IDEA:

Despite our modern luxuries, don't ignore how folks cooled their homes before air-conditioning. Work architectural features such as dogtrots, deep overhangs, sheltering porches, doors and windows aligned for cross ventilation, and operable transoms into your new home. Why? Because these tried-and-true components can help make your home more energy efficient and open.

### GREAT IDEA:

Most of Planter's Retreat is clad in siding, but instead of running horizontally, it's applied vertically, along with intermediate strips of the same material, to resemble board-and-batten. Putting a twist on conventional building techniques can give your house instant character.



### Working With the Land

Landscape architect Howell Beach of Robert Marvin/Howell Beach & Associates, Inc., of Walterboro, South Carolina, carefully designed the site to step down the hill toward the courtyard and house. Because of this layout, everything about the farmstead isn't seen in one glance. Instead, the entry drive reveals each part step-by-step. Howell planted the pastures with seasonal grains, which suit the landscape and keep animals from grazing on the flowerbeds and orchards. ▶



Screened Porch



### Screened-in Sanctuary

Outdoor spaces that are both comfortable year-round and directly linked to important indoor living space prove crucial for this Florida home. “Three pairs of French doors lead you from the kitchen/dining room to a screened porch that wraps the north and western sides of the house,” says Frank Paris of The St. Joe Company. “It extends the living space and protects the area from the afternoon sun.”

The roof extends a good 3 feet beyond the edge of the porch’s screen framing. With extra roof protection, the space can be enjoyed in good and bad weather, and it can be decorated like an interior room with furniture, accessories, and even appliances such as an ice-maker or mini-fridge.

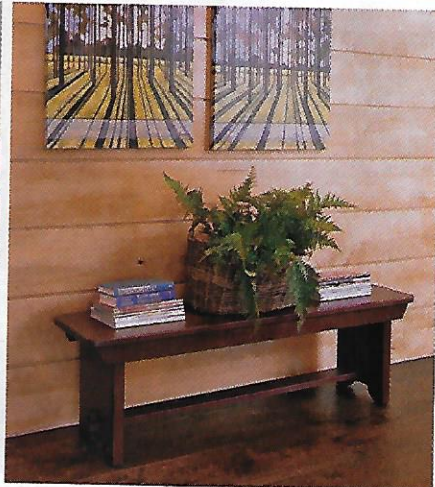


### GREAT IDEA:

When it comes to designing a kitchen, there’s always a trade-off between upper cabinets and windows for wall-space. Here, the architects omitted the upper cabinets, except above the stack of ovens. Above the main countertop, a series of casement windows opens into the screened porch. A brushed nickel shelf placed over the windows on the kitchen side provides display space without obstructing light.



Kitchen



**GREAT IDEA:** If you're tired of the flat look of drywall, consider another treatment, such as the horizontal 1 x 8 maple planks used on the side wall in the kitchen. Not ready to commit to this surface everywhere? Accent one wall with wood.

**Down-home Looks With a Fresh Twist**

A central dining table makes gathering for family meals a priority. From here, it's all comfortable yet contemporary. Black-stained base cabinetry and a matching central island, complete with a sink, contain all the storage necessary for small appliances and cookware. For extra convenience, a walk-in pantry holds bulk items. Other features, such as stainless steel appliances and luminous, solid-surface countertops, lend the kitchen a sleek style. ▶



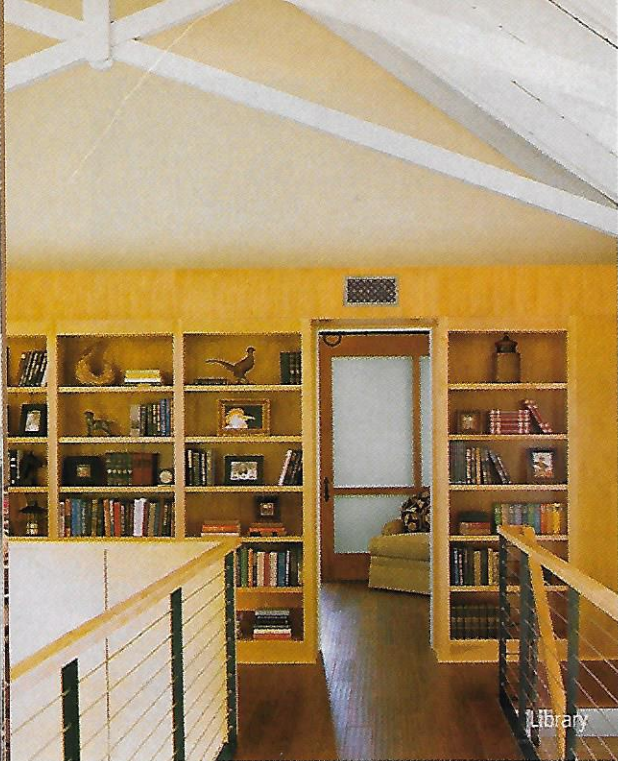
**NATIONAL SPONSOR  
JELD-WEN  
Interior Doors**

Interior doors from JELD-WEN accentuate the character of Planter's Retreat. The pressed doors leading to the bedrooms, closets, and baths are a better choice than hollow-core models. They're heavy like real wood but don't warp, swell, or split. To find a dealer near you, call 1-800-877-9482, ext. PRSH, or visit [www.jeld-wen.com](http://www.jeld-wen.com).



**NATIONAL SPONSOR  
Square D**

Today's families benefit from home technology designed to make life more mobile, flexible, and convenient. That's why at this house, Square D Clipsal® lighting controls fill the bill. The lighting control system offers the ability to program virtually any light from any switch in the house. For more information call 1-888-778-2733, or visit [www.squared.com](http://www.squared.com).



Library

### Book Lover's Hangout

At the top of the stairs and at one end of the bridge that connects the bedrooms, you enter one of this home's most intimate spots—the library. "Because people spend their lives collecting books, photo albums, and magazines, it's not surprising that libraries are on the comeback," says Darcy.

Overlooking the family room, the library contains an entire wall of wooden bookshelves stained a nutmeg color. Because the ceiling is vaulted, the architects built in the air ducts on top of the bookcases. ▶

### Casual Spot To Kick Back

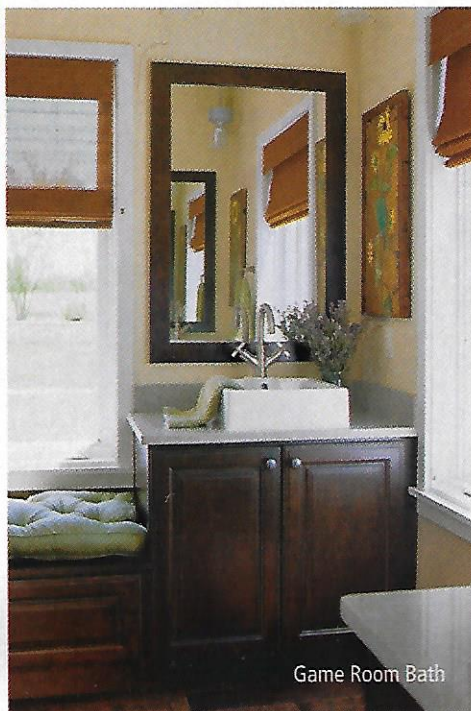
Set apart from the main house, the game room makes a great place for a party. A centrally placed pool table sets the stage. The room also contains a fireplace for cool nights and two pairs of French doors accessing a spacious patio. If more sleeping space is needed, this room can easily be converted into another bedroom.

Guests don't have to go back to the main house to search for the powder room. The bath also has ample space for overnight visitors to store their things.

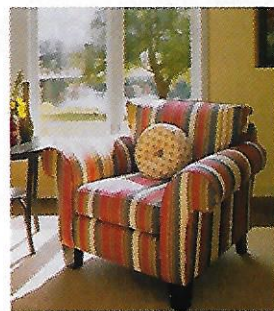
**GREAT IDEA:** Add sophisticated, soft touches to a game room. Hang an unexpected white drum shade light fixture over a pool table; display colorful, contemporary paintings on the walls; and fill gaps in the room with tall, graceful potted palms. This room also has a bar/snack counter to cut down on trips to the kitchen when entertaining.



Game Room



Game Room Bath



### NATIONAL SPONSOR Broyhill

Classic furniture never goes out of style, so when updating your home, look to Broyhill. Identified by their traditional lines, well-crafted details, and solid construction, Broyhill's collections, such as the upholstered chairs found in this house's family room, will enhance any room. For a dealer near you, call 1-800-3-BROYHILL, or visit [www.broyhillfurn.com](http://www.broyhillfurn.com).



### NATIONAL SPONSOR Mohawk Carpet

Few things up a home's comfort factor like plush carpeting. That's why we chose Mohawk to stand up to the test in the kids' rooms. Mohawk provides great carpet options for nearly every residential purpose, decorating style, and budget. For more information call 1-800-2-MOHAWK, or visit [www.mohawkarpet.com](http://www.mohawkarpet.com).



Master Bedroom

**GREAT IDEA:**

To make a master suite feel more open, use a sliding door to divide your bedroom and bath. This one runs on a track above an extra-wide doorway. A design plus: You don't have to worry about how it will swing open into the room.

**Private Master Suite**

Buffered from the rest of the house by the adjacent library, the master bedroom is a quiet, super-private spot. The room is crowned with a vaulted ceiling lined with exposed beams. For added comfort, a sitting area with oversize upholstered chairs makes a great spot for reading the morning paper.

High-set casement windows keep the headboard of the king-size poster bed from blocking natural light. The windows are framed by floor-length draperies hung on an inexpensive copper pipe with finials attached to the ends.



Master Bath

**GREAT IDEA:**

Add a creative touch to traditional elements. Here, the master bath's shower occupies the silo-shaped structure on the main house. This shower doesn't have a typical floor drain. Instead, teak decking allows water to drain before it reaches the master vanity. A skylight lets in natural light to enhance this one-of-a-kind bathing experience.



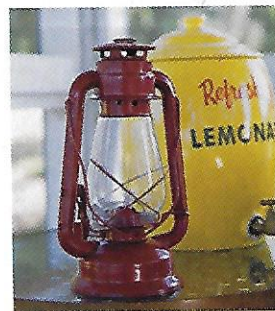
**Have Fun With Design**

The master bath fits in with the farmhouse setting while incorporating more modern design elements. The green-stained vanity has open shelving for easy storage. Large sink bowls sit on the countertops; the clean-lined faucets are placed in the wall above. The claw-foot tub sits in full view of the connecting bedroom.



**GREAT IDEA:**

Interlocking stainless steel sheets covered at the seams with matching vertical strips accentuate one wall and the shower.



**NATIONAL SPONSOR  
Wal-Mart**

To accessorize Planter's Retreat, Wal-Mart's "For the Home" division had everything in stock and at the right price. The property's pond house benefited from lanterns, fishing tackle, and pillows from Wal-Mart. Find furniture, rugs, bedding, lighting, curtains, blinds, and a vast line of small appliances at your nearby Wal-Mart store, or visit [www.walmart.com/home](http://www.walmart.com/home).



**NATIONAL SPONSOR  
Morton Buildings**

When it came time to design an attractive, durable stable to complement Planter's Retreat, Morton Buildings stepped up to the plate. Whether it be a small hobby shop or a large activity center, Morton Buildings can design a structure to fit your needs. For more information call 1-800-447-7436, or visit [www.mortonbuildings.com](http://www.mortonbuildings.com).

